

SPACE AVAILABLE FOR LEASE

M

MARKET STREET BUSINESS PARK

THE PROPERTY

Market Street Business Park is an infill multi-tenant industrial park offering suites ranging from 600-15,000 SF of space across six buildings. The Park provides easy access to major thoroughfares of I-610 (0.9 Miles) and I-10 (0.5 Miles) by way of Market Street and Mercury Drive.

The park is professionally owned and managed by Pagewood. Significant capital improvements have been recently completed by Pagewood at Market Street Business Park, including:

- Concrete repairs throughout the site
- New roofs installed and roof repairs completed on all six buildings
- New speculative improvements completed in vacancies, including new rollup doors, AC units, lighting, office & restroom finishes and metal framing, throughout the park
- Substantial improvements completed at 10205 Market Street, a single-tenant 14,500 SF opportunity, including:
 - Exterior building improvements completed including new metal framing and new paint
 - Spec office finishes and new lighting throughout, including a second floor of office plus mezzanine level in the warehouse
 - Concrete repairs completed in the dedicated yard and truck court
- New project branded signage installed throughout



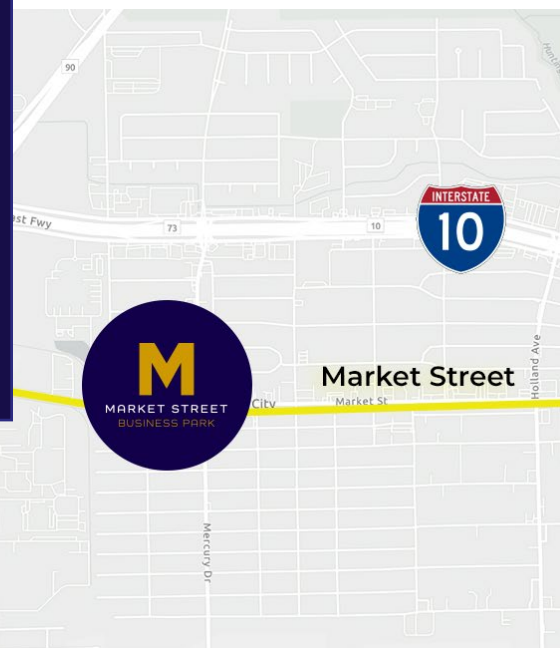
6 TOTAL
BUILDINGS



MOVE-IN
READY SUITES



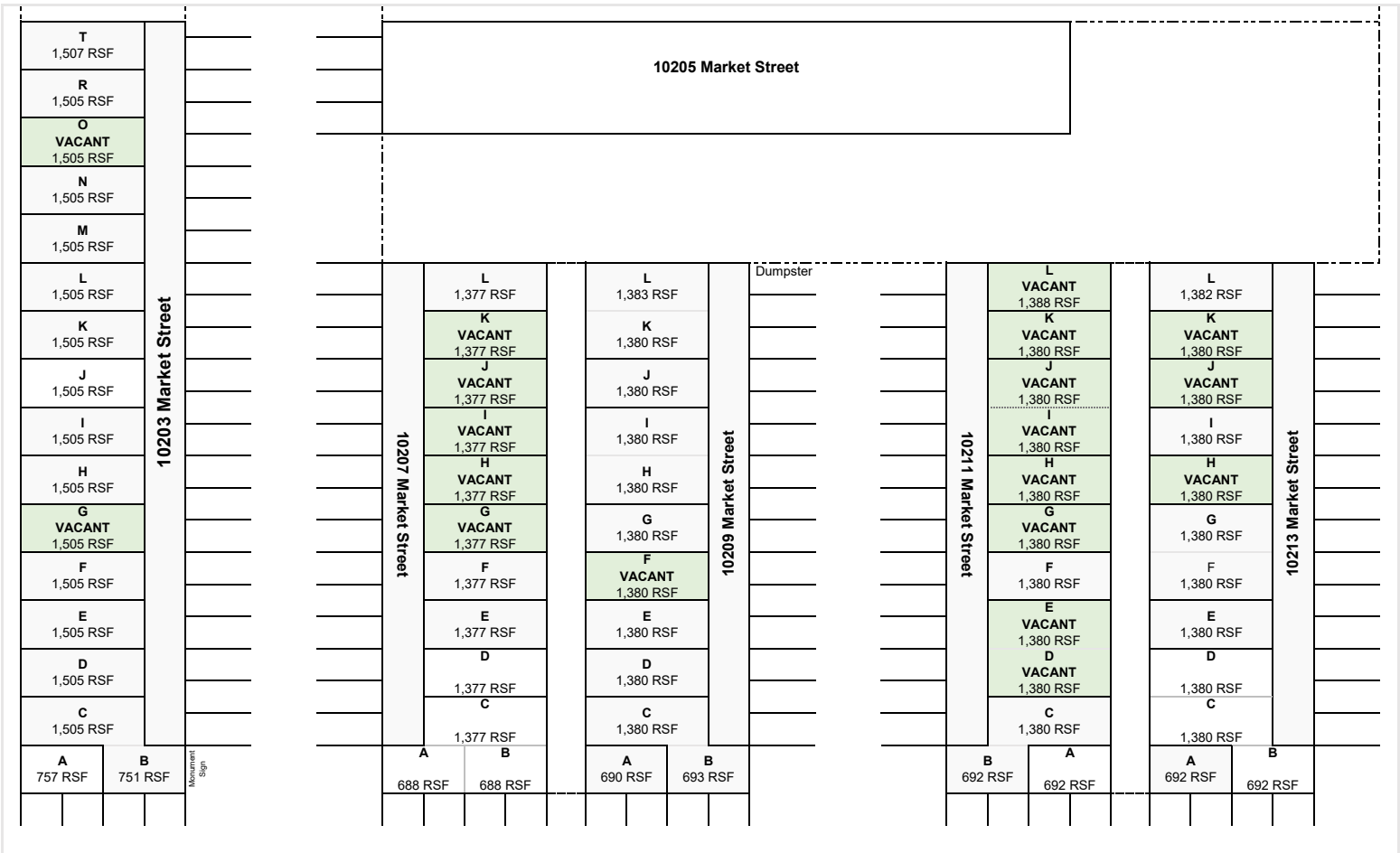
RENOVATIONS
COMPLETED



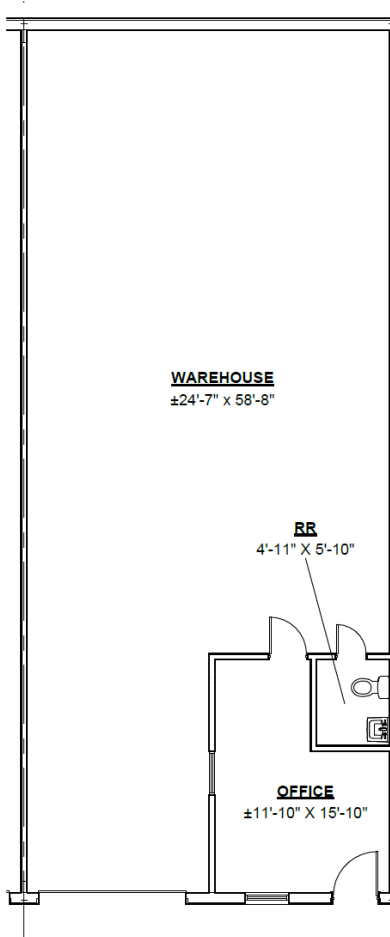


MARKET STREET BUSINESS PARK

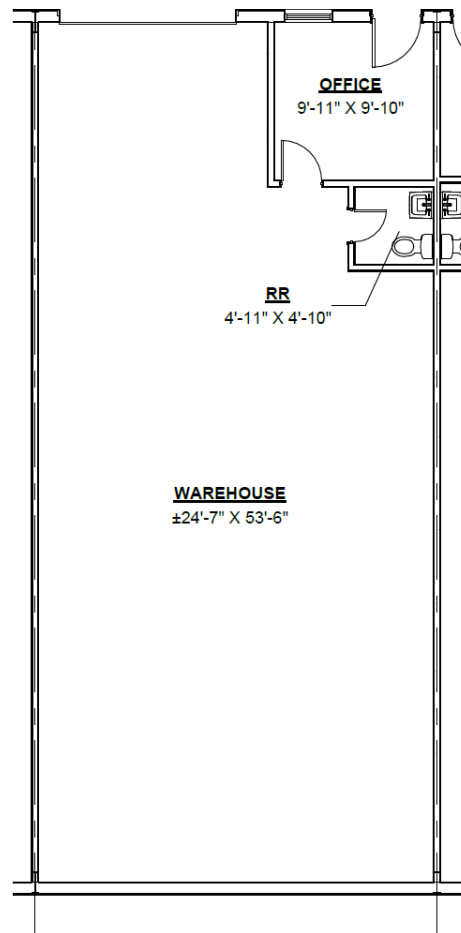
SITEPLAN



FLOOR PLANS



STANDARD
1,505 SF



STANDARD
1,377 SF

PARK HIGHLIGHTS

Building 1:

Building Size: 24,003 SF
Clear Height: 12'

Building 2:

Building Size: 15,122 SF
Clear Height: 12'

Building 3:

Building Size: 15,124 SF
Clear Height: 12'

Building 4:

Building Size: 15,122 SF
Clear Height: 12'

Building 5:

Building Size: 15,123 SF
Clear Height: 12'

Building 6:

Building Size: 14,435 SF
Clear Height: 20'

AMENITIES & FEATURES:

Move-in ready suites available featuring dedicated office space, restrooms, grade-level loading doors and dedicated parking spaces.





LEASED BY:



OWNED & MANAGED BY:

PAGEWOOD

LEASING CONTACTS:

DERICK PERKINS
derickp@alpinecre.net
432-296-2994

KYLE FISCHER
kylef@alpinecre.net
281-627-0834