



GEORGIBELLE BUSINESS PARK

THE PROPERTY

Georgibelle Business Park is nestled in the Memorial City area with unparalleled accessibility and access to I-10 and new retail and development surrounding the property. The location capitalizes on the dynamic energy of the highly active area, specifically for this product type. Georgibelle Business Park availability ranges from 100 - 5,500 SF.

The park is professionally owned and managed by Pagewood. Significant capital improvements include:

- Concrete repairs throughout the site
- New roofs or repairs on all buildings
- Landscaping upgrades throughout the park
- Painting and repairs to building facades
- Spec improvements including lighting, tiling, office finishes etc.

PROPERTY HIGHLIGHTS

Buildings: 9
SF: 102,600 SF
Land: 4.5 AC



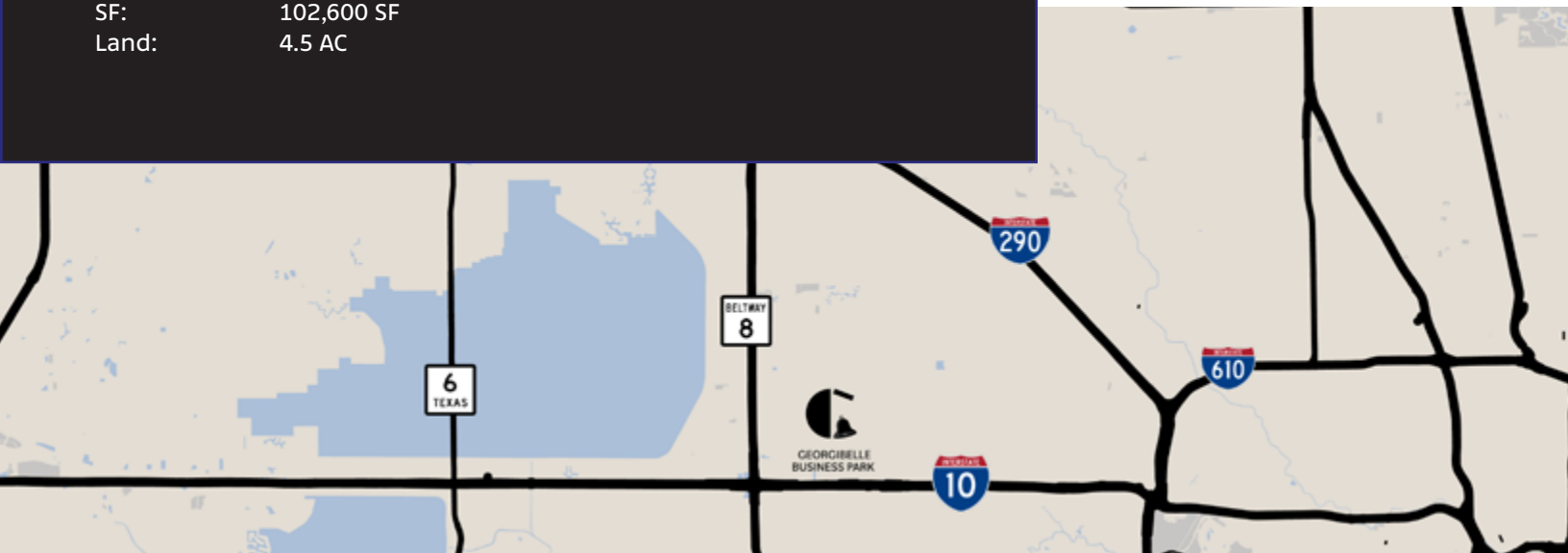
9 TOTAL
BUILDINGS



MOVE-IN READY
SUITES



RENOVATIONS
UNDERWAY





A 2,100 SF	B 1,375 SF	C	D 2,100 SF	E	F	G	H
1106 Wisterwood							
10226 Georgibelle							
1		2 3,640 SF		3	4	5	

400	300
400	
200	200
	100
	100
200	100
	100

10222 Gbelle

1100	1100
1000	1000
900	900
	800
	700
	600
500	500
	400
300	300
200	200
	200

10220 Gbelle

1000	1000
900	750
750	
700 1,500 SF	
600	600
400	500
300	300
200	100/200
100	

10218 Gbelle

900	900 2,100 SF
850	
850	
800	800
	800
600	600
550	550
400	400
300	300
300	
200	200
100	100

10216 Gbelle

900	900
800	800
700	700
650	
600	600
600	
500	
500	500
400	400
300	300
100/200	100/200

10214 Gbelle

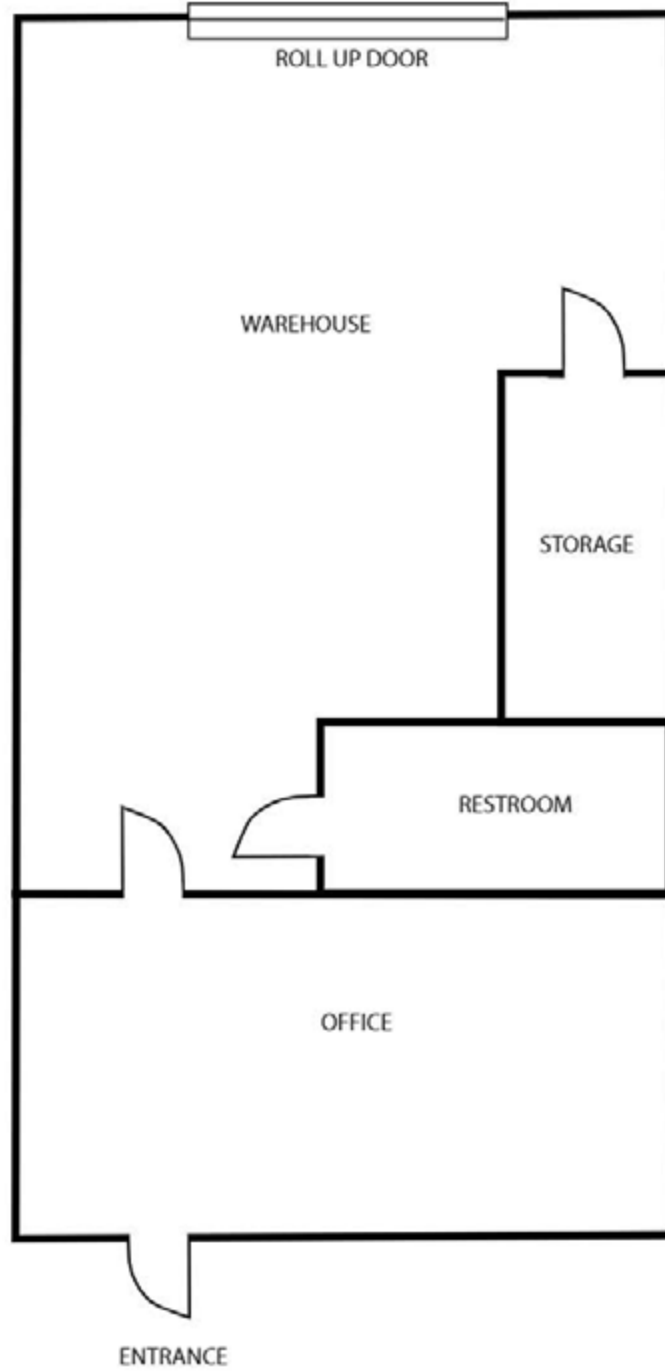
500	6
400	400
300	300
	550
	200
200	200
	100
100	2
	100

10212 Gbelle

19	19
21	9
22	8 150 SF
23 150 SF	7
24	6
25	5
26	4
27	3
28	2
29 200 SF	1

10210 Georgibelle







PARK HIGHLIGHTS

Building 1:

10210 GEORGIBELLE
Building Size: 3,798 SF

Building 2:

10212 GEORGIBELLE
Building Size: 6,570 SF

Building 3:

10214 GEORGIBELLE
Building Size: 12,950 SF

Building 4:

10216 GEORGIBELLE
Building Size: 14,300 SF

Building 5:

10218 GEORGIBELLE
Building Size: 16,250 SF

Building 6:

10220 GEORGIBELLE
Building Size: 13,500 SF

Building 7:

10222 GEORGIBELLE
Building Size: 10,400 SF

Building 8:

10226 GEORGIBELLE
Building Size: 10,650 SF

Building 9:

1106 WISTERWOOD
Building Size: 16,800 SF

AMENITIES & FEATURES:

Move-in ready suites available featuring dedicated office space, restrooms, grade-level loading doors and dedicated parking spaces.





GEORGIBELLE BUSINESS PARK



LEASED BY:



OWNED & MANAGED BY:

PAGEWOOD

LEASING CONTACTS:

DERICK PERKINS
derickp@alpinecre.net
432-296-2994

KYLE FISCHER
kylef@alpinecre.net
281-627-0834