



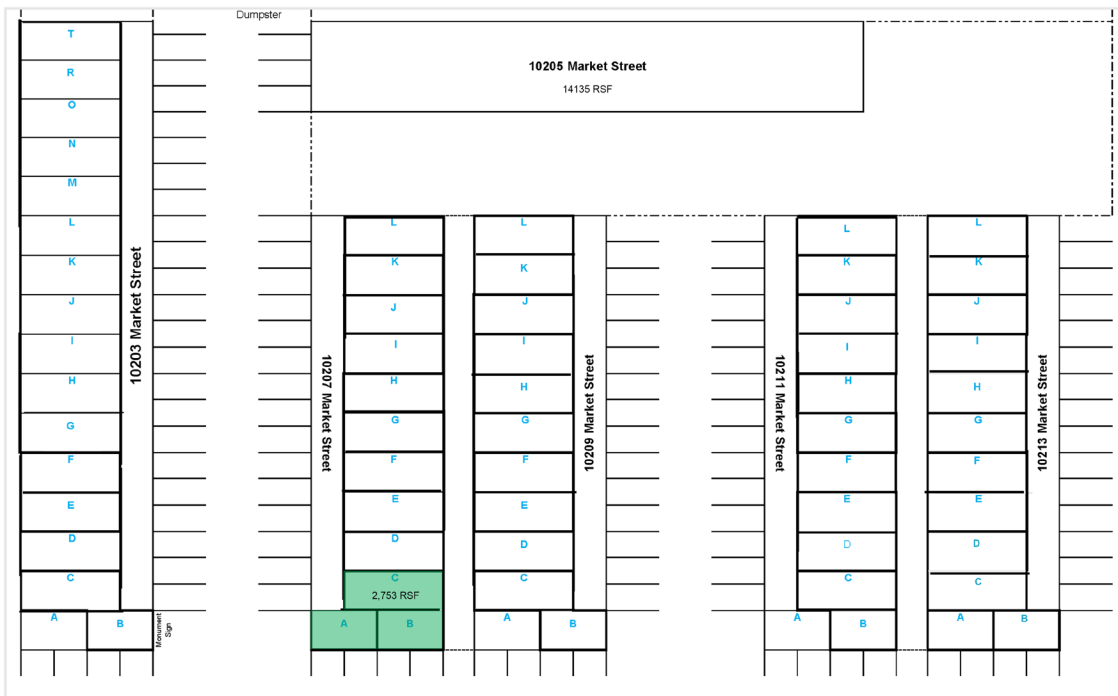
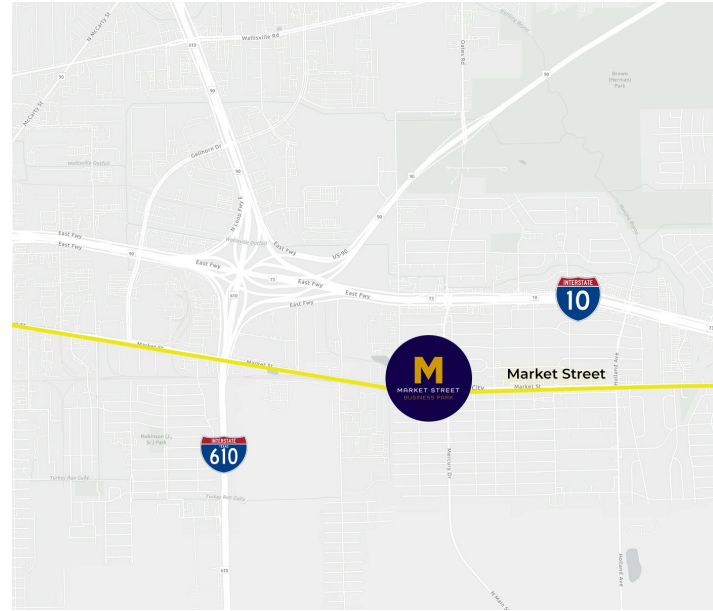
THE PROPERTY

Market Street Business Park is an infill multi-tenant industrial park offering suites ranging from 600-15,000 SF of space across six buildings. The Park provides easy access to major thoroughfares of I-610 (0.9 Miles) and I-10 (0.5 Miles) by way of Market Street and Mercury Drive.

TOTAL SF: 2,753

FEATURES:

- Concrete repairs throughout the site
- New roofs installed and roof repairs completed on all six buildings
- New speculative improvements completed in vacancies, including new rollup doors, AC units, lighting, office & restroom finishes and metal framing, throughout the park



M MARKET STREET BUSINESS PARK



LEASED BY:



OWNED & MANAGED BY:

PAGEWOOD

LEASING CONTACTS:

DERICK PERKINS
derickp@alpinecre.net
432-296-2994

KYLE FISCHER
kylef@alpinecre.net
281-627-0834